



# INTERNATIONAL NASH DAY



INTERNATIONAL  
NASH DAY | 

| June 9 2022 | Summary Report



2022

# INTERNATIONAL NASH DAY

**June 9 2022**

Summary Report

# Contents

## COVER

### TABLE OF CONTENTS

MESSAGE FROM CEO  
DONNA R. CRYER, JD 02

KEY NUMBERS 04

ENDORSEMENTS 06

PARTNERS 09

List of Countries  
International Non-Governmental Organizations  
National Patients' Organizations and Foundations  
Universities, Hospitals and Research Centers  
Additional Institutional Partners

KEYNOTE EVENT  
AT THE EMBASSY OF ITALY 12

"WHAT'S NASH" 14

NASH DAY EDUCATIONAL PANELS 15  
Overview  
Panel Statistics  
Panels and Panelists

DIGITAL MEDIA CAMPAIGN  
AND STATISTICS 24  
#NASHday  
Press Release  
Website  
Social Media Toolkit

EDUCATIONAL MATERIALS 29

INTER(NASH)IONAL RECIPE BOOK 29  
NASH DAY HIGHLIGHTS  
Global Liver Institute's Liver Action Network  
Liver Health Screening Events  
Partner Events

INTERNATIONAL NASH DAY  
2022 SPONSORS 48

APPENDIX A: FULL LIST OF PARTNERS 49

# Message from the CEO

“The momentum that we build together each year must advance and sustain the global fight against NASH.”



Donna R. Cryer, Founder and CEO, Global Liver Institute

Nonalcoholic steatohepatitis (NASH) is a serious, progressive condition in which too much fat accumulates on the liver, leading to its inflammation and injury. It is the severe form of nonalcoholic fatty liver disease (NAFLD). Modern lifestyle and dietary patterns have contributed to increased prevalence of NASH and NAFLD around the world, and it is becoming the most common cause of liver disease. Given its widespread impact and the possibility of prevention in most cases of this disease, **NASH emerges as a global health priority.**

With over a hundred million people worldwide who already have NASH and several times more in precursor stages, people have reason to know about this progressive condition and what they can do today to combat it. Collective action is imperative to be certain that individuals in each community, no matter their

background or environment, are informed and equipped to prevent fatty liver disease. The momentum that we build together each International NASH Day must advance and sustain the global fight against NASH.

This 5th International NASH Day was a tremendous global success. We felt the power in the movement as over 70 partners from over 70 countries participated. **On social media, thanks to the global participation of more than 1,000 users, #NASHDAY received over 15 million impressions and reached more than 4 million unique accounts.**

Similarly, media advisories and news releases reached thousands of journalists around the world. The press release, distributed to international media outlets, had a total potential reach of 4 billion and counting. International NASH Day 2022 garnered a record-breaking endorsement from 22 prominent organizations from around the globe including American Association for the Study of Liver Diseases (AASLD), Asociación Latinoamericana para el Estudio del Hígado (ALEH), Associazione Italiana Studio del Fegato (AISF), Asian Pacific Association for the Study of the Liver (APASL), Canadian Association for the Study of the Liver (CASL) and 17 other important scientific international and national organizations (listed in full on page 6).

**For the first time, Global Liver Institute's partners led liver health screening events around the world to combat the critical need for early detection of NAFLD/NASH.** Liver health screenings are a critical tool to enable early detection and diagnosis of NAFLD/NASH. From the United States to Ghana to India and more, GLI's partners have stepped up to the occasion and met their community's needs in thoughtful, creative ways.

Again this year, partners crafted and amplified timely messages to promote liver health on social media, produced high-quality videos, and convened experts for virtual webinars to fight NASH in their communities. The world rebuilds from the COVID-19 pandemic with an increased commitment to high-quality, in-person awareness events: across the globe, partners hosted bike-a-thons, school seminars, held press conferences and interviews on live talk shows, and more, all as part of our efforts to #StopNASHNow.

We recognize the importance of supporting liver patients with a solution at every stage of chronic liver disease, which often begins with the question “What should I prepare for dinner?”. To this end, GLI collected recipes from partners around the world to develop the Inter(NASH)ional Recipe Book. Through straightforward instructions and ingredient lists for delicious cultural meals, the fight for liver health can begin at home.

International NASH Day grows significantly each year and in the process meets a growing demand for actionable, timely, and research-based liver health information. Thanks to the commitment of partners and participants worldwide, the 5th Annual International NASH Day has been a tremendous success, and GLI has been able to chart a clear path for our advocacy work in the years to come. **We are grateful to everyone who has contributed to this global movement.**

**Donna R. Cryer, JD**  
Founder and CEO  
Global Liver Institute

A handwritten signature in black ink that reads "Donna R. Cryer".

# Key Numbers

International  
#NASHDAY  
JUNE 9 2022

**>15 MILLION**  
#NASHDAY  
IMPRESSIONS 

**4.3 BILLION**  
PRESS RELEASE  
POTENTIAL REACH 

**9**



**SPONSORS**


**>4M**  
#NASHDAY  
REACH 

**78**



**NASH DAY  
PARTNERS**

**246 MINUTES**

**AVERAGE TIME SPENT  
ONLINE VIEWING  
THE PANELS** 

**22**

**ENDORSERS, SCIENTIFIC  
SOCIETIES AND  
INTERNATIONAL  
ORGANIZATIONS** 

**71**

**COUNTRIES  
REPRESENTED  
IN PARTNER  
AND ATTENDEE  
REGISTRATION  
COUNTRIES** 

**6**

**NASH  
EDUCATIONAL  
PANELS** 

# Endorsers, Scientific Societies and International Organizations



- American Association for the Study of Liver Diseases
- Association of Black Gastroenterologists and Hepatologists
- Associazione Italiana Studio del Fegato
- Asociación Latinoamericana estudio de el higado
- Asociación Mexicana de Hepatología
- Asian Pacific Association for the Study of the Liver
- Canadian Association for the Study of the Liver
- Conference on Liver Disease in Africa
- European African Treatment Advocates Network
- European Fatty Liver Conference
- European Society for Paediatric Gastroenterology Hepatology and Nutrition
- EU Patient-Centric Clinical Trial Platforms
- Fondazione Epatocentro Ticino
- Hepatology Society, Dhaka, Bangladesh
- Hepatology Society of the Philippines
- Indian National Association for the Study of the Liver
- North American Society For Pediatric Gastroenterology, Hepatology & Nutrition
- Sociedad Argentina de Hepatologia
- Turkish Association for the Study of the Liver
- United European Gastroenterology
- World Gastroenterology Organisation
- World Patients Alliance

- AASLD
- ABGH
- AISF
- ALEH
- AMH
- APASL
- CASL
- COLDA
- EATAN
- EFLC
- ESPGHAN
- EU-PEARL
- HSP
- INASL
- NASPGHAN
- SAHE
- TASL
- UEG
- WGO
- WPA

## NASH Day 2022 was endorsed by 22 scientific societies and international organizations.





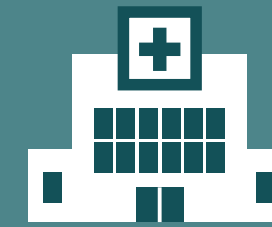
## Countries and Territories Represented in Partner and Attendee Registrations

# NASH DAY 2022 Reach

Algeria	Greece	
Argentina	Guatemala	
Armenia	Honduras	
Australia	India	
Austria	Indonesia	Romania
Bangladesh	Iran	Russia
Belgium	Ireland	Saudi Arabia
Brazil	Israel	Sierra Leone
Bolivia	Italy	Singapore
Cameroon	Japan	Slovenia
Canada	Kenya	Spain
Chile	Lebanon	South Africa
China	Mexico	Sri Lanka
Croatia	Mongolia	South Korea
Colombia	Netherlands	State of Palestine
Costa Rica	Nigeria	Sweden
Cuba	North Macedonia	Switzerland
Denmark	Norway	Thailand
Dominican Republic	Pakistan	Turkey
Ecuador	Panama	Uganda
Egypt	Paraguay	United Kingdom
Finland	Perù	United States
France	Philippines	Uruguay
Germany	Poland	Venezuela
Ghana	Puerto Rico	Vietnam

## Patients' Organizations and Foundations

Australian Patients Association <b>(Australia)</b>	APA
Asian Pacific Health Foundation <b>(USA)</b>	APHF
Black Liver Health Initiative <b>(USA)</b>	BLHI
Canadian Liver Foundation <b>(Canada)</b>	CLF
Christian Community Healthcare Foundation <b>(Kenya)</b>	COHECF
Community Liver Alliance <b>(USA)</b>	
Deutsche Leberhilfe <b>(Germany)</b>	
Dutch Liver Patient Association <b>(Netherlands)</b>	
European African Treatment Advocates Network	EATAN
Empire Liver Foundation <b>(USA)</b>	
Empowerment for Sustainable Livelihood <b>(Ghana)</b>	EFSL
Fatty Liver Alliance <b>(Canada)</b>	
Fatty Liver Foundation <b>(USA)</b>	FLF
Friends of Liver Foundation West Bengal <b>(India)</b>	
Fundacion Mexicana para la Salud Hepatica <b>(Mexico)</b>	FundHepa
Hellenic Liver Patients Association - Prometheus <b>(Greece)</b>	
Hepatitis Queensland <b>(Australia)</b>	
Hepatos <b>(Croatia)</b>	
Israeli Association For The Health Of the Liver <b>(Israel)</b>	Hetz
Lafiya Wealth Initiative <b>(Nigeria)</b>	
Liver Coalition of San Diego <b>(USA)</b>	
Liver Health Foundation <b>(USA)</b>	
Liver Patients International	
Mid-South Liver Alliance <b>(USA)</b>	
National Diabetes Organization - DiaLeb <b>(Lebanon)</b>	
NASH 24x7 Initiative <b>(India)</b>	
NASH kNOWledge <b>(USA)</b>	
Northeast Ohio Liver Alliance <b>(USA)</b>	
Obesity Action Coalition <b>(USA)</b>	OAC
Save the Liver Association for Patients <b>(Macedonia)</b>	SLAP
Texas Liver Foundation <b>(USA)</b>	
Value Health Africa <b>(Cameroon)</b>	VAHA



## Universities, Hospitals and Research Centers

Acelemed Research Institute **(USA)**  
 Asian Institute of Gastroenterology (AIG) Hospitals **(India)**  
 Amrita Hospital **(India)**  
 Arizona Liver Health **(USA)**  
 Central Virginia VA Health Care System **(USA)**  
 CIG - Centro de Investigación y Gastroenterología **(Mexico)**  
 Columbia University Medical Center **(USA)**  
 Duke University **(USA)**  
 Geisinger Medical Center **(USA)**  
 Hospices Civils de Lyon **(France)**  
 Hospital Israelita Albert Einstein **(Brazil)**  
 Houston Research Institute **(USA)**  
 La Maestra Community Health Center **(USA)**  
 Newcastle University **(UK)**  
 New York Presbyterian Hospital **(USA)**  
 Mayo Clinic **(USA)**  
 Seattle Children's Hospital **(USA)**  
 University of Haifa **(Israel)**  
 University of Mainz **(Germany)**  
 University of Maastricht **(Netherlands)**  
 University of Washington School of Medicine **(USA)**  
 VA Richmond Health Care **(USA)**  
 Virginia Commonwealth University **(USA)**  
 Weill Cornell Medicine **(USA)**



## Additional Institutional Partners

ChronWell  
 Tawazun Health



# Keynote Event

at the Embassy of Italy

In recognition of International NASH Day, the Embassy of Italy, in collaboration with Global Liver Institute, hosted a series of presentations on Tuesday, June 14, 2022 entitled **“From Progress in the Control of Viral Hepatitis to the Rising Epidemic of NASH.”** To highlight the bilateral efforts to improve liver health in Italy and the United States, the event featured expert discussions of key developments in liver disease and the role of science and research in addressing related health challenges.

Italy is one of only 12 countries in the world on track to achieve the objectives set by the World Health Organization in 2016 for the elimination of hepatitis. Ambassador Mariangela Zappia opened the event by emphasizing the collaboration between Italy and the United States on this front, noting that the “two countries collaborate side by side every day in many sectors of the life sciences, from precision medicine to oncology, from biotechnology to robotics applications and artificial intelligence in surgery.” Subsequent speakers underscored the strength and impact of this collaboration.

2020 Nobel Prize Winner in Medicine, Dr. Harvey J. Alter, MD, Distinguished NIH Scientist Emeritus, Department of Transfusion Medicine, Clinical Center, National Institute of Health (NIH), delivered an engaging and informative keynote presentation on his journey and role in discovering the hepatitis C virus.

Michael Lederman, MD, Professor Emeritus, Departments of Medicine and Pathology, Case Western Reserve University School of Medicine, Cleveland Medical Center, Editor in Chief “Pathogens and Immunity” moderated the event, which also featured informative presentations by Michael F. Iademarco MD, MPH, Rear Admiral and Assistant Surgeon General in the US Public Health Service, Deputy Assistant Secretary for Science and Medicine in the Office of the Assistant



Donna R. Cryer delivers concluding remarks to attendees

Secretary of Health; Carolyn Wester, MD, Director of the Division of Viral Hepatitis, CDC; and Patrizia Farci, MD, Chief, Hepatic Pathogenesis Section, Laboratory of Infectious Diseases, National Institute of Allergy and Infectious Diseases, NIH. Each of these speakers provided unique perspectives and critical insight to the substantial efforts required to protect and promote liver health.

GLI’s CEO, Donna R. Cryer, JD, delivered concluding remarks: “All of our wonderful speakers from so many different aspects and perspectives of science and medicine and public health have all come together to so well articulate the enormity of the challenge that we have in front of us on the pathway to achieving global liver health,” she shared. “It takes leadership, as we’ve seen by Italy’s screening program. It takes leadership, as we’ve seen in Italy’s invitation to the Global Liver Institute today and its invitation in hosting so many transformative men and women from science. But it also takes patient leadership.”



Ambassador Mariangela Zappia, Donna R. Cryer



From left to right: Jeff McIntyre, Lily Benig, Elisabeth Vogel, Dr. Harvey Alter, Donna R. Cryer, Giacomo Donnini and Andrew Scott

# What's NASH Video



In preparation for International NASH Day, Global Liver Institute and Andrea Ventura went out on the streets of Washington D.C. to understand how much the average person knows about NASH. The 2-minute video compilation of street interviews included questions such as “Have you ever heard of fatty liver disease” or “Have you ever heard of NASH”. While it is estimated that every 1 in 4 people may have fatty liver disease, results from the street interviews indicated an apparent need to increase awareness of NAFLD and NASH within our communities.



# Educational Panels

## Overview

International NASH Day convenes physicians, advocates, and other experts to share the latest insights on how to prevent, diagnose, and manage fatty liver disease. An informed worldwide community is essential to reduce the global prevalence of fatty liver disease, which can advance dangerously if left undetected and unacknowledged. Patients, caregivers, medical providers, policymakers, and all other advocates will learn actionable ways to support patients already diagnosed with NASH and to seek methods of risk reduction.

On June 9, GLI hosted six virtual educational panels featuring well-known key opinion leaders, clinical, research, and patient experts in liver disease, nutrition, and public health. **Each of the panels were broadcasted in five languages—English, Spanish, French, Mandarin and Hindi** – for a broad worldwide audience to build awareness of and spark action to prevent NASH and will be available for continued viewing on GLI’s YouTube channel. Panels are available for continued viewing on GLI’s YouTube channel as well the International NASH Day website.

**Check out the panels at [bit.ly/GLI-playlists](https://bit.ly/GLI-playlists)**

Each of the panels were broadcasted in five languages—*English, Spanish, French, Mandarin and Hindi*

## PANELS & PANELISTS

### Addressing the Challenges of NASH in 2022

With new knowledge and new investments, it's time to look forward and tackle NASH as an integrated metabolic disease. Dr. Arun Sanyal, Director of the Virginia Commonwealth University Stravitz-Sanyal Institute for Liver Disease and Metabolic Health, joins GLI CEO & Founder, Donna Cryer, to open the 5th Annual International NASH Day.

### NASH Patients in Their Own Voices

Support from friends and family makes a huge difference for patients in their fight against NASH, a disease that still carries stigma and misunderstanding. Hear from NASH Patients in Their Own Voices in this panel featuring GLI founder & CEO, Donna Cryer, and patient advocates Ximena Arredondo-Silva, Katelin Haynes, Catherine Irmik, and Brian Preiswerck.

#### Introduction



**Michael Rao, PhD**

President  
Virginia Commonwealth University  
Richmond, VA, USA



**Donna R. Cryer, JD**

Founder and CEO  
Global Liver Institute  
Washington, DC, USA



**Arun Sanyal, MD, MBBS, FAASLD**

Director, Stravitz-Sanyal Institute for Liver Disease and Metabolic Health, VCU Medical Center  
Chairman of the NIH NASH Clinical Research Network, the NIMBLE consortium Chairman of the Liver Forum for NASH and Fibrosis  
Richmond, VA, USA

#### Moderator



**Donna R. Cryer, JD**

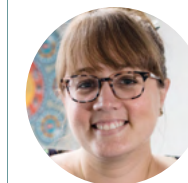
Founder and CEO  
Global Liver Institute  
Washington, DC, USA

#### Panelists



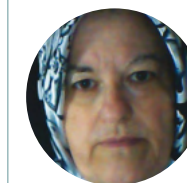
**Ximena Arredondo**

Patient Advocate  
Mexico City, Mexico



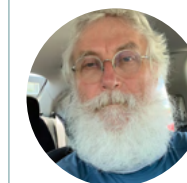
**Katelin Haynes**

CEO  
Hepatitis Queensland  
Queensland, Australia



**Catherine Irmik**

Patient Advocate  
Ashford, Kent, UK



**Brian Preiswerck**

Patient Advocate  
Canadian Liver Foundation  
Ontario, Canada

## PANELS & PANELISTS

### NASH Diagnostics & Beyond

The collection is growing of tools for NASH screening and guidelines for their use. GLI founder & CEO, Donna Cryer, is joined by Drs. Quentin Anstee, David Diehl, and Mazen Nouredin, in this discussion on **early-stage detection and diagnosis of NASH**.

### Leading Models for Care in NASH

With the scope of NASH, new models are needed to empower care teams to provide comprehensive, timely, patient-centric care at scale. GLI CEO & Founder, Donna Cryer, is joined by Drs. Naim Alkhouri, Amreen Dinani, Michael Fuchs, Sonal Kumar, and Joe Rubinsztain, in this panel **exploring various models of care for patients with NASH**.

#### Moderator

#### Panelists



**Donna R. Cryer, JD**

Founder and CEO

Global Liver Institute

Washington, DC, USA



**Prof. Quentin Anstee, BSc(Hons), MB BS, PhD, MRCP(UK), FRCP**

Deputy-Dean of Research & Innovation – Faculty of Medical Sciences

Professor of Experimental Hepatology & Consultant Hepatologist

Translational & Clinical Research Institute

Faculty of Medical Sciences

Newcastle University

Newcastle, UK



**David L. Diehl, MD, FACP, FASGE**

Clinical Professor of Medicine and Pathology

Director of Interventional Endoscopy

Department of Gastroenterology and Hepatology

Geisinger Medical Center

Danville, PA, USA



**Mazen Nouredin, MD, MHSc, Director**

Houston Research Institute

Houston, TX, USA

#### Moderator Panelists



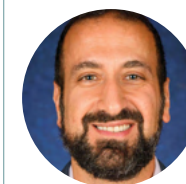
**Donna R. Cryer, JD**

Founder and CEO

Global Liver Institute

Washington, DC

USA



**Naim Alkhouri, MD, FAASLD**

V.P. of Academic Affairs and Fatty Liver Program Director

Arizona Liver Health

Chandler, AZ, USA

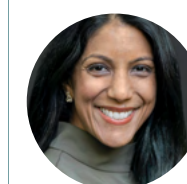


**Amreen Dinani, MD, FRCPC**

Associate Professor of Medicine

Duke University

Durham, NC, USA



**Sonal Kumar, MD, MPH**

Director of Clinical Hepatology

Weill Cornell Medicine/New York Presbyterian Hospital

New York, NY, USA



**Joe Rubinsztain, MD**

CEO & Co-Founder

ChronWell

Sunrise, FL, USA



**Michael Fuchs, MD, PhD**

Professor of Medicine; Chief of Gastroenterology

Hepatology and Liver Transplantation

Central Virginia VA Healthcare System

Richmond, VA, USA

## PANELS & PANELISTS

# Navigating NASH: Perspectives from Black Pediatric Patients and their Families

Though NASH is often thought of as an issue for adults, there has been a rise in pediatric NAFLD/NASH. Learn more on NASH in Black children from our experts with the Association of Black Gastroenterologists and Hepatologists and the Black Liver Health Initiative.

### Introduction

### Moderator

### Panelists



**Donna R. Cryer, JD**

Founder and CEO

Global Liver Institute

Washington, DC, USA



**Rotonya Carr, MD, FACP**

Cyrus E. Rubin Endowed Chair in Medicine, Division Head of Gastroenterology, Associate Professor of Medicine, University of Washington

Founding Member, Association of Black Gastroenterologists and Hepatologists

Seattle, WA, USA



**Hannibal Person, MD**

Assistant Professor of Medicine, University of Washington School of Medicine

Pediatric Gastroenterologist and Hepatologist, Seattle Children's Hospital

Medical Director, Gut-Brain Health Program, Seattle Children's Hospital

Member, Association of Black Gastroenterologists and Hepatologists

Seattle, WA, USA



**Lorna Dove, MD, MPH**

Professor of Medicine, Director of Liver Transplant, Columbia University Medical Center

Member, Association of Black Gastroenterologists and Hepatologists

Member, Black Liver Health Initiative

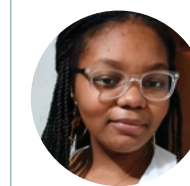
New York, NY, USA



**Stacey Woodson, MS, RD, LDN**

Registered Dietitian & Author, Children's Book Series "Delicious and Nutritious"

Philadelphia, PA



**Miss Naomi Walls-Smith**

Patient Advocate

Philadelphia, PA



**Ms. Roselee Walls**

Patient Advocate

Philadelphia, PA

## PANELS & PANELISTS

### The Challenges of NASH: What's Next



After a fruitful day of conversation about NASH and global events, GLI's NASH Programs Director, Jeff McIntyre, sat down with Surfing the NASH Tsunami podcast team, Roger Green, Louise Campbell, and Jörn Schattenberg, to recap International NASH Day and take a look forward.

#### Moderator

#### Panelists



**Jeff McIntyre**

NASH Programs Director  
Global Liver Institute  
Washington, DC, USA



**Louise Campbell, MSc AP (Hons), Cert MHSC, RMN, RN**

Founder, Medical Director  
Tawazun Health  
London, UK



**Roger Green**

CEO, SurfingNASH.com  
Executive Producer and Host,  
Surfing the NASH  
Tsunami podcast  
New Hope, PA, USA







**Jörn Schattenberg, MD**

Professor of Medicine  
and Director of the Metabolic  
Liver Research Program  
University MedicalCenter Mainz  
Mainz, Germany



# Digital Media Campaign






#NASHday and #StopNASHNow  
 GLI followers as of #NASHday 2022:

	Twitter	<b>4,009</b>
	LinkedIn	<b>2,092</b>
	Facebook	<b>3,600</b>
	Instagram	<b>2,412</b>












## #NASHday analytics

Twitter, Instagram, Facebook  
*(excludes LinkedIn)*

	Posts	<b>4,000</b>
	Users	<b>800</b>
	Engagements	<b>5K</b>
	Reach	<b>4M</b>
	Impressions	<b>5M</b>

(>3.5K compared to NASH Day 2021)

### Most engaging accounts:

Most Engaging		Most Frequent	
	<b>@interceptph...</b> 2,585 Followers 122 Avg Engagements		<b>@kymwatt</b> 753 Followers 51 Avg Engagements
	<b>@schattenbergj</b> 616 Followers 46 Avg Engagements		<b>@terebroquetas</b> 288 Followers 41 Avg Engagements
	<b>@i_m_stormborn</b> 944 Followers 38 Avg Engagements		<b>@nash24x7</b> 1,378 Followers 37 Avg Engagements
			<b>@petrahirsova</b> 1,030 Followers 46 Avg Engagements
			<b>@alkhourinaim</b> 1,363 Followers 39 Avg Engagements
			<b>@jsgracia</b> 1,171 Followers 33 Avg Engagements

## Press Release

Total Potential Reach

**4.3 Billion**

Full text placements

**404**

Headline placements

**53**

## Keywords

NASH, International, Liver, Disease, Awareness

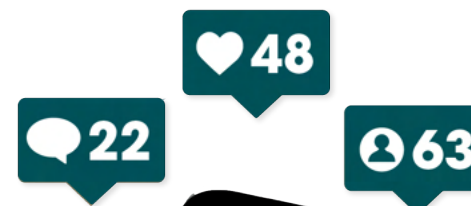
## Website

Visit Global Liver Institute's International NASH Day website at [www.international-nash-day.com](http://www.international-nash-day.com) and discover our NASH-centered digital world.

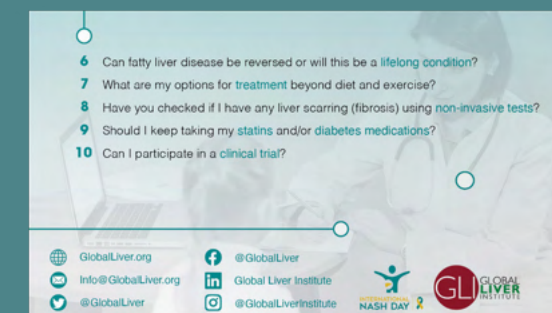
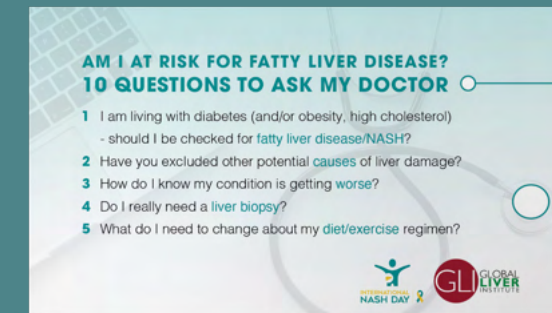
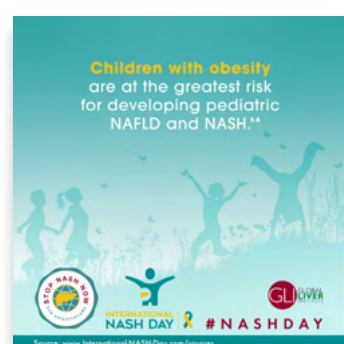
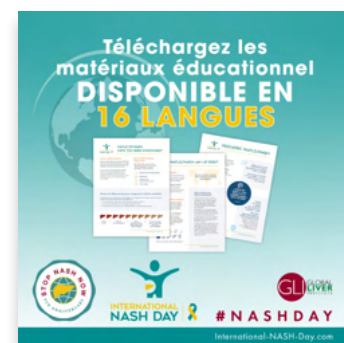
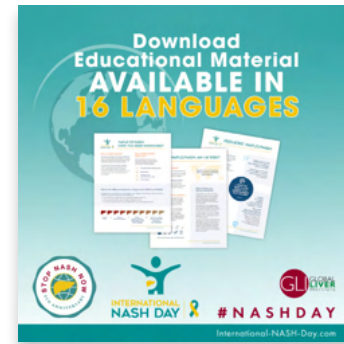
The website includes a world map with NASH Day partners' events, the NASH-dedicated educational panel video recordings, **patient brochures available in 16 languages**, NASHDay merchandise and more.

## Social Media Toolkit

To stimulate the circulation of important information and engaging discussions on #NASHday, Global Liver Institute created a digital toolkit for social media that was available in three languages: English, French, and Spanish <https://www.international-nash-day.com/toolkit>







## Educational Materials

During International NASH Day, GLI released two new educational brochures: A Guide to Participating in Clinical Trials For Patients with NAFLD/NASH and NASH Patient Pocket Card: 10 Questions to Ask My Doctor.

These resources are designed to help patients, their families and communities understand and assess clinical research opportunities to address NAFLD/NASH diagnosis as well as encourage dialogue with their doctors regarding clinical care.

As NAFLD/NASH are progressive, chronic, life-threatening, and global diseases, **these brochures are available for patients and stakeholders throughout the world in 16 different languages:** Arabic, Chinese, Croatian, English, French, German, Greek, Hebrew, Hindi, Italian, Japanese, Macedonian, Portuguese, Russian, Spanish, and Turkish.

## Inter(NASH)ional Recipe Book



In order to educate the general public and the global liver community on the importance of a healthful diet in the prevention and management of NAFLD/NASH, **GLI coordinated a large-scale collection of culinary recipes and cuisines from advocates and partner organizations around the globe.** This collection of recipes culminated in the creation of an Inter(NASH)ional Recipe Book. This component of International NASH Day highlights the unique cuisines across various cultures and how they can contribute to healthy nutrition for the liver.

# NASH Day Partner Highlights

Global Liver Institute's | **Liver Action Network (LAN)**



## TEXAS LIVER FOUNDATION

On International NASH Day, the Texas Liver Foundation hosted a webinar with liver experts entitled “Fatty Liver in Children: Learn and Act!” in partnership with The Health Museum.

## NASH KNOWledge

NASH KNOWledge’s Executive Director, Gina Madison, appeared on the local CBS News station in Pittsburgh, Pennsylvania to discuss International NASH Day and the linkage between nutrition and liver health.

## Fatty Liver Alliance

The Fatty Liver Alliance hosted a series of educational events to raise awareness on June 9 including a webinar addressing “The Importance of Early Detection of NAFLD/NASH” with Hepatologist, Mark Swain and Primary Care Physician Dr. Ming Jung, a 6-part NAFLD in children webinar series hosted on LinkedIn, and a 2-part series titled Fibroscan 101 www.on LinkedIn.

The Fatty Liver Alliance also generated a Canada-wide press release that reached an audience of 60.5 million in addition to receiving a celebrity public service announcement by Graham Greene that reached over 7,000 impressions.

## Fatty Liver Foundation

**Fatty Liver Foundation (FLF) hosted two webinars.** The first, entitled “The Genetics of NAFLD/NASH: How the Fatty Liver Foundation is Innovating to Accelerate Personalized Medicine Research,” aimed to close the knowledge gap on hereditary risk factors within NAFLD/ NASH patient community by offering home-based genetic testing with linkage to personalized opportunities for individuals to participate in NAFLD/NASH medical research and clinical trials. Their second webinar, entitled “The Other Pandemic: NAFLD/ NASH – A Major, Neglected Global Public Health Problem Requiring Urgent Actions and Large-Scale Screening,” was dedicated to the NAFLD/NASH pandemic from patients’ perspectives.

**FLF, in collaboration with Sano Genetics, also announced the building of the first community-driven health and wellness platform for people at-risk of or living with NAFLD/NASH called The Wellness League.**



# Liver Health Screening Events

515 FREE LIVER HEALTH SCREENINGS PROVIDED



## Arizona Liver Health

USA

GLI's LAN Member, Arizona Liver Health, were hard at work to reverse the growing trend of fatty liver disease. **Free screening events were offered at three of their Arizona clinics on International NASH Day.** ALH also set up an information booth at each of these clinics and provided visitors a "10 Questions to Ask your Doctor" pocket card about fatty liver disease risk factors along with ALH cause bracelets.

## Empowerment for Sustainable Livelihood

Ghana

**EFSL hosted an in-person educational and liver health screening event.** Dr. Esther Kwakye presented on NASH, its various types and stages, its causes, symptoms, consequences, risk factors, at-risk groups, and preventive measures; Isaiah Laweh presented on nutrition, focusing on diets for pre/post NASH patients.

## Liver Coalition of San Diego

USA

GLI's LAN Member, Liver Coalition of San Diego, organized a liver health education and screening event in conjunction with La Maestra Community Health Center and the Asian Pacific Health Foundation. Together, they provided free liver screening tests to patients in the San Diego area. After the health screening, patients were able to watch a short educational presentation and went home with a NAFLD/NASH patient resource packet.

## NASH 24x7 Initiative

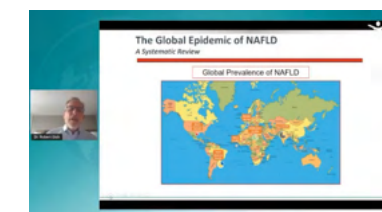
India

As part of the NASH 24x7 Initiative, healthcare **physicians came together to provide free liver scans/ liver testing camps with diagnostic labs** to enhance screening for fatty liver disease.

## Relief Hospital Palghar

India

**A free NASH/liver disease screening event** was led by the team at the Relief Hospital Palghar in Maharashtra, India under the direction of Dr. P.B. Mody. Dr. P.B. Mody also conducted a NASH awareness lecture in Hindi to all the participants of the camp, villagers and hospital staff.



# Partner Events



## Africa

### Christian Community HealthCare Foundation (COHECF)

#### Kenya

COHECF-Kenya conducted an in-person training and awareness event on NAFLD and NASH to community members of Gatua in Kitale town on methods of prevention, understanding symptoms, healthy nutrition, and the role of exercise in preventing NAFLD.



## Africa

### European African Treatments Advocates Network (EATAN)

EATAN hosted online forums, engaged in a social media campaign and disseminated NASH educational resources to their members.



## Africa

### Lafiya Wealth Initiative

#### Nigeria

Since 2019, Lafiya Wealth Initiative Nigeria has consistently commemorated International NASH Day. This year, they convened a virtual public awareness activity via Twitter, themed “How to Prevent NASH”, and led a patient education program at Garki Hospital in Abuja that touched 167 patients. Following NASH Day, their momentum remained strong as the Supervising Board Member for Lafiya Wealth Initiative, Dr. Laz Eze, who is also the producer of TalkingHealthwithDrLaz on Africa Independent Television, dedicated his full show on June 14 to educating the public on NASH. The show has thousands of viewers across West Africa and is now available on YouTube.



## Africa

### Value Health Africa (VAHA)

#### Cameroon

Value Health Africa hosted a roundtable discussion that was televised on Star TV. Roundtable members included Dr. Njei Lionel from the hepatitis clinic at the Bamenda Regional Hospital, a public health expert and the regional coordinator of Value Health Africa Northwest. VAHA also supported the social media campaign by sharing educational graphics to raise awareness about fatty liver disease and NASH.

## South - East Asia

### Friends of Liver Foundation West Bengal

#### India

The Friends of Liver Foundation West Bengal hosted virtual webinars educating their community about fatty liver disease and NASH.

## South - East Asia

### AIG Hospitals

#### India

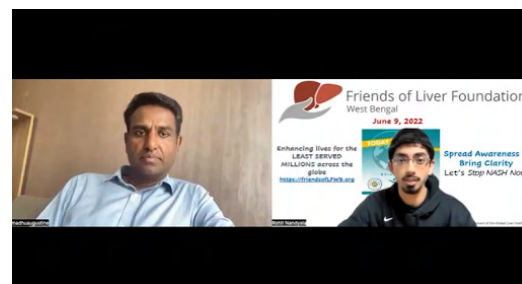
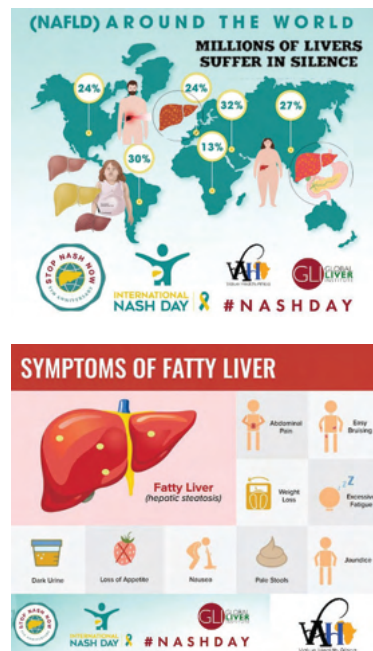
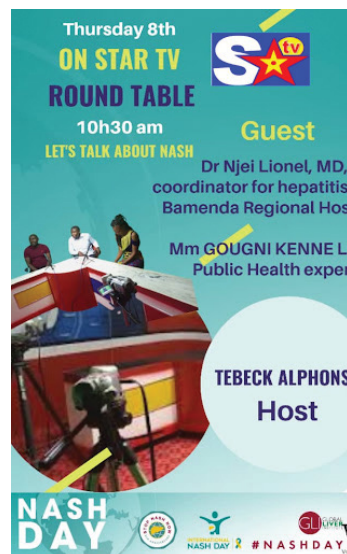
The AIG Hospital, Hyderabad, one of the largest centers of excellence for Gastroenterology and Hepatology in India announced the launch of their new Fatty Liver Clinic.

## South - East Asia

### Indian National Association for Study of the Liver (INASL)

#### India

The first meeting for the "Launch of Action Plan for Prevention & Control of NAFLD In India with the INASL taskforce on NAFLD & ICON D" team was held on the 9th of June. The program started with a press briefing followed by a public forum and meeting of the taskforce. The meeting was attended by all key stakeholders who would be leading the action plan in India. The meeting was led by Prof Ajay Duseja, Professor and Unit Head, Department of Hepatology, PGIMER, Chandigarh, Secretary-General, INASL, Convener - INASL Taskforce on NAFLD and ICON-D, along with other faculty members.





## South - East Asia

### Liver Foundation of West Bengal India

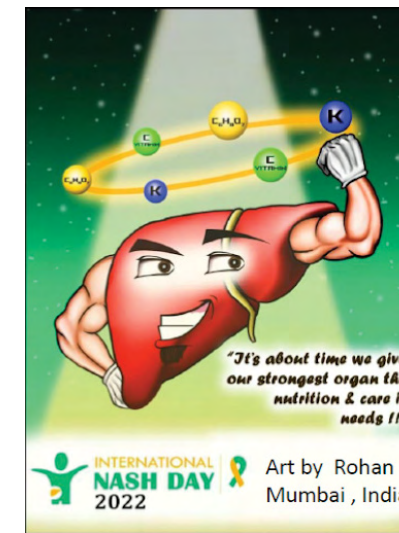
Bhalo Thakar Poth (translates to - The Path to Well-Being). **A cycle rally was organized on International NASH Day** from the only Liver & GI specific tertiary care hospital of Kolkata – Indian Institute of Liver & Digestive Science – to Sonarpur Sporting Union playground. The cyclists had placards with NASH awareness messages displayed on their cycles. The rally was preceded by a mobile public announcement vehicle which distributed leaflets among the bystanders and informed about the relevance of International NASH day to the general public. Reputed hepatologists and gastroenterologists – Dr. Asokananda Konar, Dr. Abhijit Chowdhury, and Dr. Jayanta Dasgupta and many other doctors from different disciplines joined the rally. Dr. Chowdhury cycled himself with other cyclists. He was accompanied by Ms. Madhabilata Mitra – renowned model, actress and fitness personality of Kolkata - Mr. Debshankar Halder – actor and eminent theater personality.



## South - East Asia

### NASH 24x7 Initiative India

The NASH 24x7 Initiative in India aims to raise awareness around the negative impacts of NASH. In recognition of International NASH Day, **they rallied 1930 healthcare providers to take a pledge for creating awareness on NAFLD & NASH by distributing awareness material to their patients.** Press conferences were also held at 37 locations in India and the messages disseminated were widely covered by both electronic and print media. Multiple awareness talks were conducted online, in addition to a hospital awareness campaign in which 2,400 posters were installed in English & Hindi to educate the public about NASH. The NASH 24x7 Initiative also **launched an artwork competition to spread awareness on NAFLD and NASH.**



## Australia

### Hepatitis Queensland

Hepatitis Queensland’s CEO, Katelin Haynes, participated on GLI’s panel “NASH Patients in Their Own Voices” on International NASH Day. Hepatitis Queensland also launched two resources as part of a digital campaign and shared it on their website and in clinics at the Be Liver Smart clinics.

## Central and South America

### Latinoamerican Association for the Study of Liver Disease (ALEH)

ALEH worked together with other associations, including the Mexican Association of Gastroenterology (AMG), the Mexican Neurogastroenterology and Motility Association, the National Academy of Medicine of Mexico and GLI; recorded a video about NASH; held a press conference with Sanfer and Dra. Graciela Castro-Narro, Vice President of ALEH; conducted two television interviews, and developed an expert opinion video with Medix, all around the topics of NASH/NAFLD.

## Europe

### Deutsche Leberhilfe

#### Germany

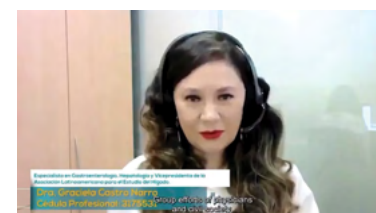
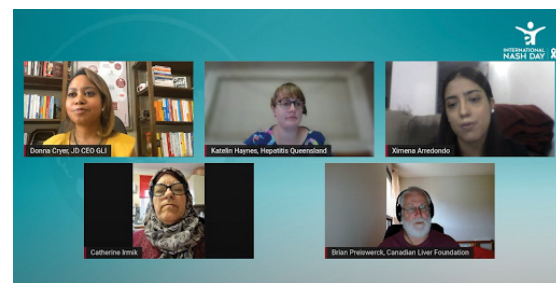
Deutsche Leberhilfe had a dedicated NASH day page that went live on their website on June 9. They sent out a press release on NASH day. Deutsche Leberhilfe also co-signed a joint statement by several medical institutions, demanding to increase the status of fatty liver disease and also implement it in national obesity guidelines and programs.

## Europe

### European Fatty Liver Conference (EFLC)

#### Netherlands

The EFLC hosted an event and had two patients speak about their experience with NASH and how we can learn from patients with obesity and the stigma they deal with.



## Europe

### Hellenic Liver Patients Association - Prometheus

Greece

Following last year's NASH prevention video, this year, the Hellenic Liver Patients Association Prometheus produced a video that details a true story from a patient used to raise public awareness.



## Europe

### Liver Patients International

Belgium

Liver Patients International created a series of social media graphics featuring important messages to raise public awareness around NASH prevention.



## Europe

### Save the Liver Association for Patients (SLAP)

North Macedonia

SLAP organized an awareness campaign entitled "Walking in the Wood" in an effort to engage with school-aged youth, who they consider to be most at risk of excessive weight gain, due to an unhealthy lifestyle. Their campaign directly involved over 70 participants and support was also provided from the local and national media.

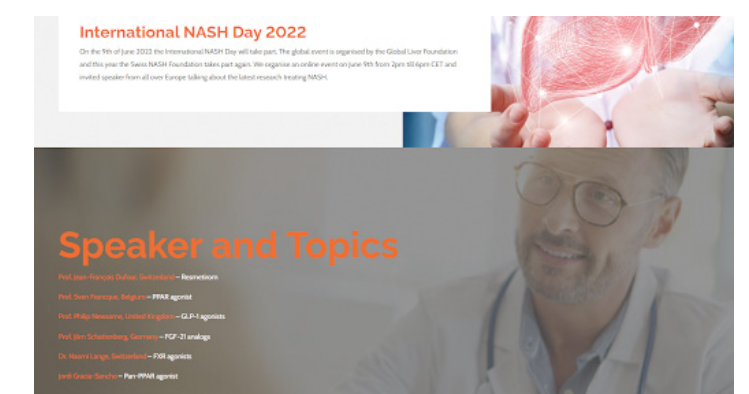


## Europe

### Swiss NASH Foundation

Switzerland

The Swiss NASH Foundation hosted an online webinar series featuring the latest research on treatment of NASH.





## Europe

### Turkish Association for the Study of the Liver (TASL)

#### Turkey

TASL celebrated International Nash Day in Sepetciler Kasri, a magnificent Ottoman building on the Bosporus, Istanbul, June 9th. The Governor of Istanbul was present at the event and famous journalists of Turkey attended. **Coverage of the NASHday event was ensured by 151 media outlets (newspapers, internet news and television).** Media outlets included TRT, CNN, HABERTURK, KANAL D and more.

## Middle East

### Dialeb National Diabetes Organization

#### Lebanon

Dialeb hosted an in-person education and diabetes screening event. A multidisciplinary panel of speakers came together to raise awareness about NASH and Diabetes by shedding light on the importance of leading a healthy lifestyle to prevent obesity thus to prevent both Diabetes and NASH. The panel discussion was followed by **free glucose testing for the attendees and distribution of educational material.** The event was also live streamed on Dialeb's YouTube channel @DialebOrg.

## North America

### Association of Black Gastroenterologists and Hepatologists (ABGH)

#### USA

The ABGH organized and led one of the virtual NASH educational panels entitled, "Navigating NASH: Perspectives from Black Pediatric Patients and Their Families."





## North America

### Centro de Investigación y Gastroenterología (CIG)

#### México

On International NASH Day, the CIG hosted a series of virtual webinars addressing fatty liver disease and NASH featuring experts working in the areas of hepatology, gastroenterology, physiotherapy, nutrition as well as involvement from various medical coordinators.

## North America

### Fundación Mexicana para la Salud Hepática / FundHepa

#### México

FundHepa created a short video on NASH and NAFLD to share across their social media platforms and web pages. FundHepa was also invited to be part of various press conferences that led to media publications on International NASH Day

## North America

### Mayo Clinic

#### USA

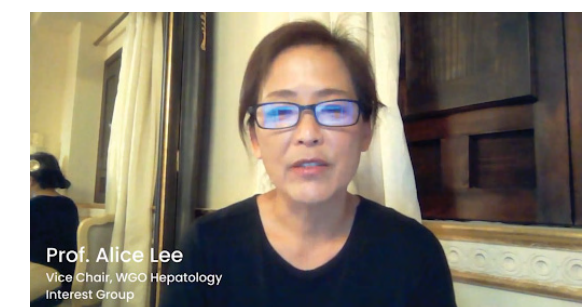
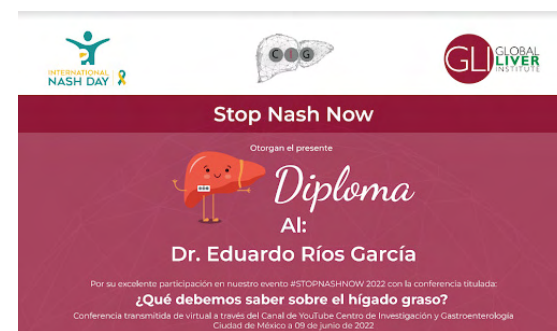
The Mayo Clinic hosted an onsite event to raise awareness around NASH and disseminated patient educational resources on NAFLD and NASH.

## North America

### World Gastroenterology Organisation (WGO)

#### USA

The WGO hosted a Social Media Outreach campaign led by Professor Alice Lee, Vice Chair of the WGO's Hepatology Interest Group. The expected reach of their campaign was over 5,000 impressions.



# International NASH Day 2022 Sponsors

Global Liver Institute is **grateful** for the leadership and generous contributions of **our sponsors** whose support makes International NASH Day possible.

A special thank you to *Capital Linguists* for supporting the translation of our patient resources

## Platinum



## Silver



## Bronze



## Contributor



## With additional support from



# Appendix A:

## Full List of Partners

ORGANIZATION	CITY	STATE/ PROVINCE	COUNTRY	WEBSITE
AASLD - American Association for the Study of Liver Diseases	ALEXANDRIA	VIRGINIA	USA	<a href="https://www.aasld.org">https://www.aasld.org</a>
ABGH - Association of Black Gastroenterologists and Hepatologists	NEW YORK	NEW YORK	USA	<a href="https://blackingastro.org/">https://blackingastro.org/</a>
Accelemed Research Institute	AUSTIN	TEXAS	USA	<a href="https://accelemedresearch.com/">https://accelemedresearch.com/</a>
ALEH - Asociación Latinoamericana para el Estudio del Hígado	SANTIAGO DE CHILE		CHILE	<a href="https://alehlatam.org/">https://alehlatam.org/</a>
Accelemed Research Institute	KERALA		INDIA	<a href="https://amritahospitals.org/">https://amritahospitals.org/</a>
Arizona Liver Health		ARIZONA	USA	<a href="https://www.azliver.com/">https://www.azliver.com/</a>
Asian Institute of Gastroenterology (AIG) Hospitals			INDIA	<a href="https://aighospitals.com/">https://aighospitals.com/</a>
AISF - Associazione Italiana Studio del Fegato			ITALY	<a href="https://www.webaisf.org/en/homepage-ing/">https://www.webaisf.org/en/homepage-ing/</a>
AMH - Mexican Association of Hepatology	MEXICO CITY		MEXICO	<a href="https://www.hepatologia.org.mxage-ing/">https://www.hepatologia.org.mxage-ing/</a>
APA - Australian Patients Association	MELBOURNE		AUSTRALIA	<a href="http://www.patients.org.au/">http://www.patients.org.au/</a>
APASL - Asian Pacific Association for the Study of the Liver	TOKYO		JAPAN	<a href="http://apasl.info/">http://apasl.info/</a>

ORGANIZATION	CITY	STATE/ PROVINCE	COUNTRY	WEBSITE	ORGANIZATION	CITY	STATE/ PROVINCE	COUNTRY	WEBSITE
<b>APHF - Asian Pacific Health Foundation</b>	SAN DIEGO	CALIFORNIA	USA	<a href="https://www.aphfsd.org/">https://www.aphfsd.org/</a>	<b>EU - PEARL - Patient-Centric Clinical Trial Platforms</b>	BARCELONA		SPAIN	<a href="https://eu-pearl.eu/">https://eu-pearl.eu/</a>
<b>BLHI - Black Liver Health Initiative</b>	NEW YORK	NEW YORK	USA	<a href="https://blackingastro.org/">https://blackingastro.org/</a>	<b>Fatty Liver Alliance</b>			CANADA	<a href="https://fattyLiver.ca/">https://fattyLiver.ca/</a>
<b>Boehringer Ingelheim</b>	INGELHEIM AM RHEIN CITY		GERMANY	<a href="https://www.boehringer-ingelheim.com/">https://www.boehringer-ingelheim.com/</a>	<b>FLF - Fatty Liver Foundation</b>	BOISE	IDAHO	USA	<a href="http://www.fattyLiverfoundation.org/">http://www.fattyLiverfoundation.org/</a>
<b>Capital Linguists</b>	SILVER SPRING	MARYLAND	USA	<a href="https://capitallinguists.com/">https://capitallinguists.com/</a>	<b>Friends of Liver Foundation West Bengal</b>		KOLKATA	INDIA	<a href="https://www.liverfoundation.in/">https://www.liverfoundation.in/</a>
<b>CASL - Canadian Association for the Study of the Liver</b>	EDMONTON	ALBERTA	CANADA	<a href="https://hepatology.ca/">https://hepatology.ca/</a>	<b>Fondazione Epatocentro Ticino</b>	LUGANO		SWITZERLAND	<a href="http://www.epatocentro.ch/en/">http://www.epatocentro.ch/en/</a>
<b>CIG - Centro de Investigación y Gastroenterología</b>	MEXICO CITY		MEXICO	<a href="https://www.centrodeinvestigacionygas-troenterologia.com.mx">https://www.centrodeinvestigacionygas-troenterologia.com.mx</a>	<b>FundHepa - Fundacion Mexicana para la Salud Hepatica</b>	MEXICO CITY		MEXICO	<a href="https://fundhepa.org/">https://fundhepa.org/</a>
<b>ChronWell</b>		FLORIDA	USA	<a href="https://www.chronwell.com/">https://www.chronwell.com/</a>	<b>Geisinger Medical Center</b>			USA	<a href="https://www.geisinger.org/">https://www.geisinger.org/</a>
<b>CLF - Canadian Liver Foundation</b>	TORONTO	ONTARIO	CANADA	<a href="https://www.liver.ca">https://www.liver.ca</a>	<b>Gilead Sciences Inc.</b>			USA	<a href="https://www.gilead.com/">https://www.gilead.com/</a>
<b>COHECF - Christian Community Healthcare Foundation-Kenya</b>	KITALE		KENYA	<a href="https://www.facebook.com/cohecfkenya/">https://www.facebook.com/cohecfkenya/</a>	<b>Hepa Prometheus</b>	ATHENS		GREECE	<a href="https://helpa-prometheus.gr">https://helpa-prometheus.gr</a>
<b>COLDA 2022- Conference on Liver Disease in Africa</b>	UTRECHT		NETHERLANDS	<a href="https://academicmedicaleducation.com/colda-2022">https://academicmedicaleducation.com/colda-2022</a>	<b>Hepatitis Hilfe Österreich Austrian Patients Association</b>	VIENNA		AUSTRIA	<a href="http://www.gesundeleber.at">www.gesundeleber.at</a>
<b>Columbia University Medical Center</b>	NEW YORK	NEW YORK	USA	<a href="https://www.cuimc.columbia.edu/">https://www.cuimc.columbia.edu/</a>	<b>Hepatitis Queensland</b>			AUSTRALIA	<a href="https://www.hepqld.asn.au/">https://www.hepqld.asn.au/</a>
<b>CLA - Community Liver Alliance</b>	PITTSBURGH	PENNSYLVANIA	USA	<a href="https://communityliveralliance.org/">https://communityliveralliance.org/</a>	<b>Hepatology Society of Bangladesh</b>	DHAKA		BANGLADESH	<a href="http://www.hepatolsocietybd.org/">http://www.hepatolsocietybd.org/</a>
<b>Department of Hepatology, Bangabandhu Sheikh Mujib Medical University</b>	DHAKA		BANGLADESH	<a href="https://bsmmu.edu.bd/">https://bsmmu.edu.bd/</a>	<b>Hepatos</b>	SPLIT		CROATIA	<a href="https://hepatos.hr">https://hepatos.hr</a>
<b>Deutsche Leberhilfe</b>	KÖLHN		GERMANY	<a href="https://www.leberhilfe.org">https://www.leberhilfe.org</a>	<b>HETZ - The Israeli Association for the Health of the Liver</b>	TEL AVIV		ISRAEL	<a href="https://hetzLiver.org">https://hetzLiver.org</a>
<b>Duke University Medical Center</b>	DURHAM	NORTH CAROLINA	USA	<a href="https://www.dukehealth.org/">https://www.dukehealth.org/</a>	<b>Hospices Civils de Lyon</b>	LYON		FRANCE	<a href="https://www.chu-lyon.fr/">https://www.chu-lyon.fr/</a>
<b>EATAN - European African Treatment Advocates Network</b>			EU	<a href="https://www.eatan.eu/">https://www.eatan.eu/</a>	<b>Hospital Israelita Albert Einstein</b>	SÃO PAULO		BRAZIL	<a href="https://www.einstein.br/en/Pages/Home.aspx">https://www.einstein.br/en/Pages/Home.aspx</a>
<b>EFLC - European Fatty Liver Conference</b>	MAASTRICHT		NETHERLANDS	<a href="https://www.mintonline.org/eflc2022/">https://www.mintonline.org/eflc2022/</a>	<b>Houston Research Institute</b>	HOUSTON	TEXAS	USA	<a href="https://hri.uh.edu/">https://hri.uh.edu/</a>
<b>EFSL - Empowerment for Sustainable Livelihood</b>	ACCRA		GHANA	<a href="https://www.facebook.com/efslgh">https://www.facebook.com/efslgh</a>	<b>HSP - Hepatology Society of the Philippines</b>	QUEZON CITY		PHILIPPINES	<a href="http://hsp.org.ph/">http://hsp.org.ph/</a>
<b>Empire Liver Foundation</b>	NEW YORK	NEW YORK	USA	<a href="https://empireliverfoundation.org/">https://empireliverfoundation.org/</a>	<b>INASL - Indian National Association for Study of the Liver</b>	NEW DELHI		INDIA	<a href="https://www.inasl.org.in">https://www.inasl.org.in</a>
<b>ESPGHAN - The European Society for Paediatric Gastroenterology Hepatology and Nutrition</b>	GENEVA		SWITZERLAND	<a href="https://www.espgan.org/">https://www.espgan.org/</a>	<b>Intercept</b>	NEW YORK	NEW YORK	USA	<a href="https://www.interceptpharma.com/home-page-non-usa/">https://www.interceptpharma.com/home-page-non-usa/</a>

ORGANIZATION	CITY	STATE/ PROVINCE	COUNTRY	WEBSITE	ORGANIZATION	CITY	STATE/ PROVINCE	COUNTRY	WEBSITE
<b>Johannes Gutenberg University of Mainz</b>	MAINZ		GERMANY	<a href="https://www.uni-mainz.de/eng/">https://www.uni-mainz.de/eng/</a>	<b>OAC - Obesity Action Coalition</b>	TAMPA	FLORIDA	USA	<a href="https://www.obesityaction.org/">https://www.obesityaction.org/</a>
<b>La Maestra Community Health Center</b>	SAN DIEGO	CALIFORNIA	USA	<a href="https://lamaestra.org/">https://lamaestra.org/</a>	<b>PBC Foundation</b>	EDINBURGH		UNITED KINGDOM	<a href="https://www.pbcfoundation.org.uk">https://www.pbcfoundation.org.uk</a>
<b>LabCorp</b>	BURLINGTON	NORTH CARO-	USA	<a href="https://www.labcorp.com/">https://www.labcorp.com/</a>	<b>Regeneron Pharmaceuticals</b>	BUENOS AIRES		ARGENTINA	<a href="https://www.regeneron.com/">https://www.regeneron.com/</a>
<b>Lafiya Wealth Initiative</b>	ABUJA		NIGERIA	<a href="https://www.facebook.com/Lafiyawealth-NG/">https://www.facebook.com/Lafiyawealth-NG/</a>	<b>SAHE - Sociedad Argentina de Hepatologia</b>	SEATTLE	WASHINGTON	USA	<a href="https://www.aaeah.org.ar/es/">https://www.aaeah.org.ar/es/</a>
<b>Liver Coalition of San Diego</b>	SAN DIEGO	CALIFORNIA	USA	<a href="https://livercoalition.org/">https://livercoalition.org/</a>	<b>Seattle Children's Hospital</b>	PRILEP		NORTH MACEDONIA	<a href="https://www.facebook.com/SLAPSaveLiverAssociationforPatients/">https://www.facebook.com/SLAPSaveLiverAssociationforPatients/</a>
<b>Liver Health Foundation</b>	IRVINE	CALIFORNIA	USA	<a href="https://www.liverhealthfoundations.org/">https://www.liverhealthfoundations.org/</a>	<b>SLAP - Save the Liver Association for Patients</b>	BERN		SWITZERLAND	<a href="https://swissnashfoundation.org">https://swissnashfoundation.org</a>
<b>LPI - Liver Patients International</b>	BRUSSELS		BELGIUM	<a href="https://liverpatientsinternational.org/who-we-are/">https://liverpatientsinternational.org/who-we-are/</a>	<b>Swiss NASH Foundation</b>			UK	<a href="https://tawazunhealth.com/">https://tawazunhealth.com/</a>
<b>Madrigal</b>	WEST CONSHO HOCKEN	PENNSYLVANIA	USA	<a href="https://www.madrigalpharma.com/">https://www.madrigalpharma.com/</a>	<b>Tawazun Health</b>	FOSTER CITY	CALIFORNIA	USA	<a href="https://www.ternspharma.com/">https://www.ternspharma.com/</a>
<b>Mayo Clinic</b>	ROCHESTER	MINNESOTA	USA	<a href="https://www.mayoclinic.org/">https://www.mayoclinic.org/</a>	<b>Terns Pharmaceutical</b>	HOUSTON	TEXAS	USA	<a href="https://www.texasliverfoundation.org/">https://www.texasliverfoundation.org/</a>
<b>Merck</b>			USA	<a href="https://www.merck.com/">https://www.merck.com/</a>	<b>Texas Liver Foundation</b>	ISTANBUL		TURKEY	<a href="https://www.tkad.org.tr/invitation">https://www.tkad.org.tr/invitation</a>
<b>Mid-South Liver Alliance</b>	NASHVILLE	TENNESSEE	USA	<a href="https://www.alignable.com/nashville-tr/mid-south-liver-alliance">https://www.alignable.com/nashville-tr/mid-south-liver-alliance</a>	<b>Turkish Association for the Study of the Liver - TASL</b>	VIENNA		AUSTRIA	<a href="https://ueg.eu">https://ueg.eu</a>
<b>NASH 24x7 Initiative</b>			INDIA	<a href="https://www.nash24x7.com/">https://www.nash24x7.com/</a>	<b>UEG - United European Gastroenterology</b>			ISRAEL	<a href="https://www.haifa.ac.il/?lang=en">https://www.haifa.ac.il/?lang=en</a>
<b>NASH KNOWledge</b>	PITTSBURGH	PENNSYLVANIA	USA	<a href="https://www.nash-now.org">https://www.nash-now.org</a>	<b>University of Haifa</b>			NETHERLANDS	<a href="https://www.maastrichtuniversity.nl/">https://www.maastrichtuniversity.nl/</a>
<b>NASPGHAN - North American Society for Pediatric Gastroenterology, Hepatology and Nutrition</b>	Ambler	PENNSYLVANIA	USA	<a href="https://naspghan.org/">https://naspghan.org/</a>	<b>University of Maastricht</b>	SEATTLE	WASHINGTON	USA	<a href="https://www.uwmedicine.org/school-of-medicine">https://www.uwmedicine.org/school-of-medicine</a>
<b>National Diabetes organization - DiaLeb</b>	JDEIDEH		LEBANON	<a href="https://dialeb.org/">https://dialeb.org/</a>	<b>University of Maastricht University of Washington School of Medicine</b>	RICHMOND	VIRGINIA	USA	<a href="https://www.va.gov/richmond-health-care/">https://www.va.gov/richmond-health-care/</a>
<b>Newcastle University</b>	NEWCASTLE		UNITED KINGDOM	<a href="https://www.ncl.ac.uk/medical-sciences/">https://www.ncl.ac.uk/medical-sciences/</a>	<b>VA Richmond Healthcare</b>	BUEA		CAMEROON	<a href="http://www.valuehealthafrica.org/">http://www.valuehealthafrica.org/</a>
<b>New York Presbyterian Hospital</b>	NEW YORK	NEW YORK	USA	<a href="https://www.nyp.org/">https://www.nyp.org/</a>	<b>Value Health Africa</b>	RICHMOND	VIRGINIA	USA	<a href="https://medschool.vcu.edu">https://medschool.vcu.edu</a>
<b>NLV - Dutch Liver Patients Association</b>	HOOGLAND		NETHERLANDS	<a href="http://www.leverpatientenvereniging.nl/">http://www.leverpatientenvereniging.nl/</a>	<b>Virginia Commonwealth University</b>	NEW YORK	NEW YORK	USA	<a href="https://weill.cornell.edu/">https://weill.cornell.edu/</a>
<b>Northeast Ohio Liver Alliance</b>		OHIO	USA	<a href="https://liveralliance.org">https://liveralliance.org</a>	<b>Weill Cornell Medicine</b>		WISCONSIN	USA	<a href="https://www.worldgastroenterology.org/">https://www.worldgastroenterology.org/</a>
<b>Novo Nordisk</b>			USA	<a href="https://www.novonordisk-us.com/">https://www.novonordisk-us.com/</a>	<b>WGO - World Gastroenterology Organisation</b>	WASHINGTON	DC	USA	<a href="https://www.worldpatientsalliance.org/">https://www.worldpatientsalliance.org/</a>
					<b>WPA - World Patients Alliance</b>	NEW HAVEN	CONNECTICUT	USA	<a href="https://medicine.yale.edu">https://medicine.yale.edu</a>
					<b>Yale University School of Medicine</b>	AHMEDABAD	GUJARAT	INDIA	<a href="https://zyduscadila.com/">https://zyduscadila.com/</a>
					<b>Zydus Lifesciences</b>				



[globalliver.org](http://globalliver.org)



[info@globalliver.org](mailto:info@globalliver.org)



[@globalliverinstitute](#) | [@intnashday](#)



[@GlobalLiver](#) | [@intNASHday](#)



Global Liver Institute



Global Liver Institute is a 501(c)(3) tax exempt not-for-profit organization, with headquarters both in the United States and in Europe. **Our mission is to improve the effectiveness of the liver community by promoting innovation, collaboration, and scaling optimal approaches to eradicating liver disease.**

International NASH Day and its logo are a registered trademark of Global Liver Institute. This content is intended to provide helpful health information to the general public. This content is not intended as medical advice for individual problems. Global Liver Institute, including its board of directors and staff personnel, specifically disclaim all responsibility for any liability, loss, or risk, personal or otherwise, which is incurred as a consequence, directly or indirectly, of the use and application of any of the content.



